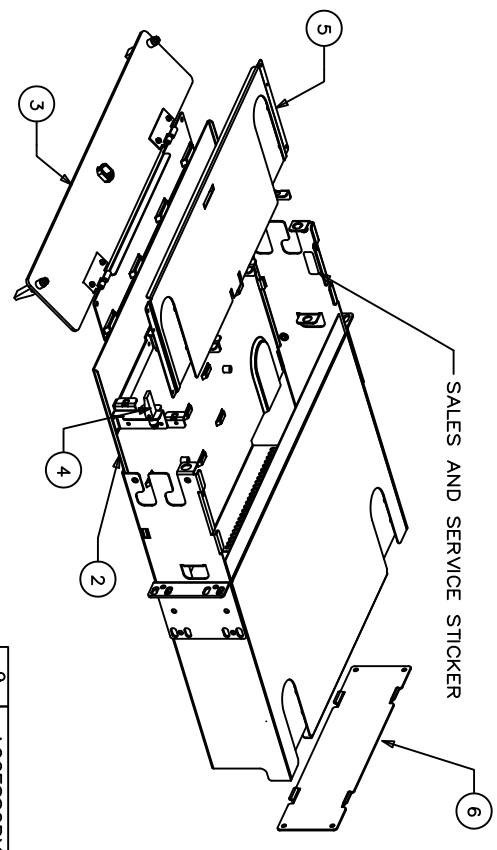
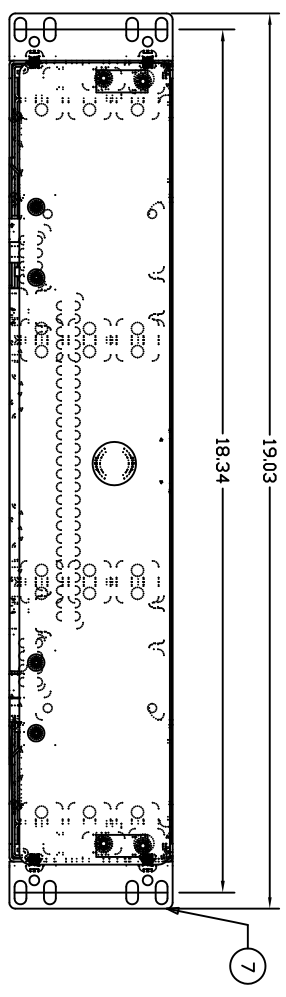
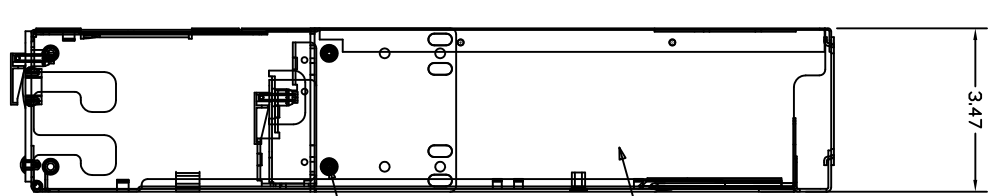
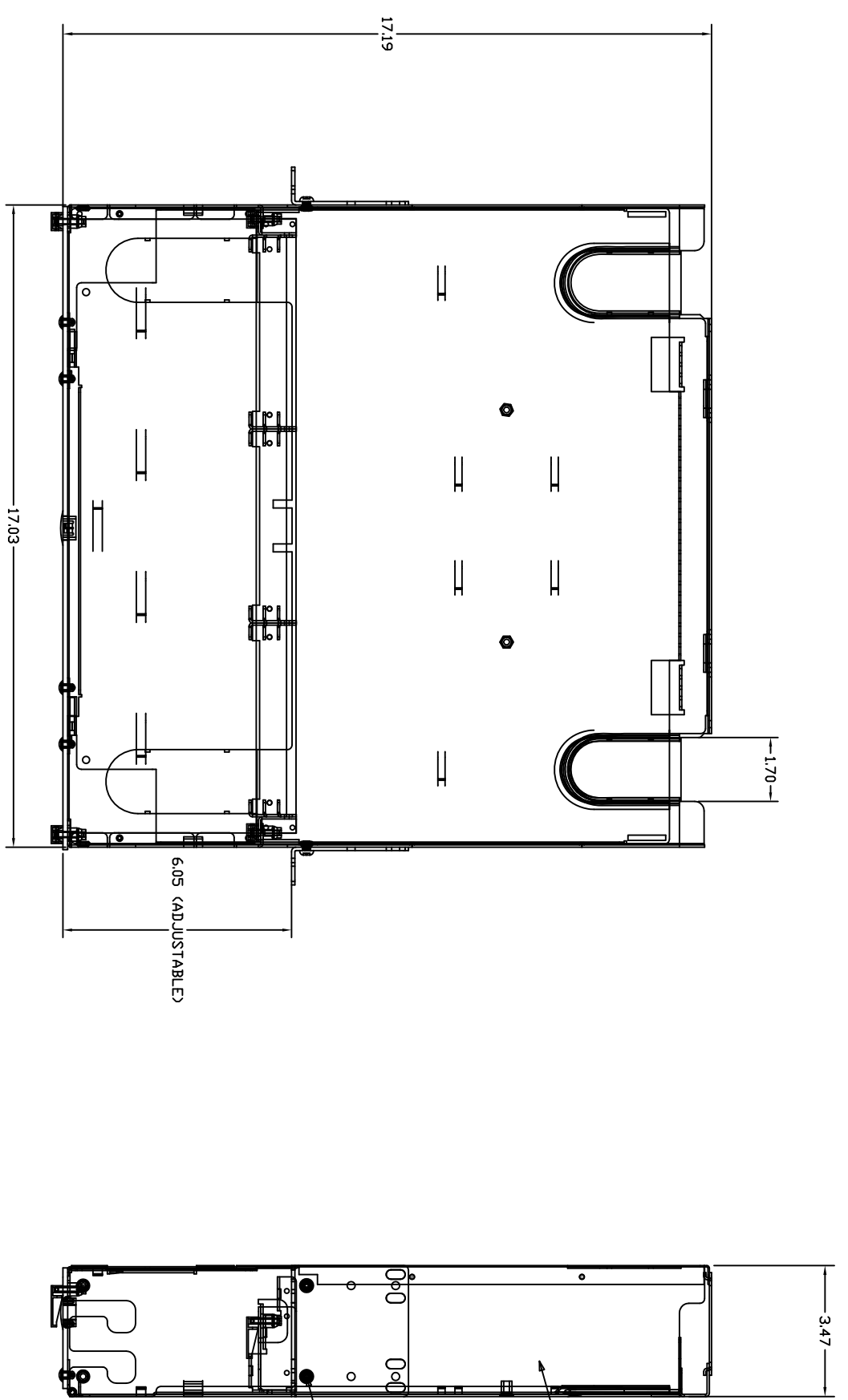


CATALOG	DESCRIPTION	COLOR
FOR2U9SPNA	FIBER, RKMNT PNL, 2U, 9 FSP PNL, UNLD, NA	BLACK



DESCRIPTION	QUANTITY
PLASTIC FIBER SPOOL	4
10.75" BLACK WIRE TIE	8
10-32 NYLON WING NUT	1
12-24X3/8 PHILLIPS PH SCR	4
DANGER LABEL,FO PRODUCTS	1
VELCRO STRAP-8" BLACK	2
WASHER,FLAT,SPECIAL,NYLON	1
10-32X2" 18-8 SS STUD	1
LABEL SHIT,2U MATRIX	2
FCR, NA, INSTRUCTION SHEET	1
FIBER ROUTING SPOOL, 30mm	2
FCR LABEL HOLDER	1

- NOTES:
1. REMOVEABLE/SLIDE OUT TOP FRONT COVER.
 2. REMOVEABLE REAR DOOR, FRONT DOOR, AND ADAPTER TRAY.
 3. 19" AND 23" RACK MOUNTABLE.
 4. ACCEPTS UP TO NINE MODULAR SIX-PACK ADAPTER PANELS.
 5. FRONT COVER LOCKING OPTION.
 6. BUILT IN CABLE/PATCH CORD MANAGEMENT FEATURES.
 7. BLACK ELECTROSTATICALLY APPLIED POWDER COAT.
 8. CABINET OCCUPIES 2 RACK SPACES.
 9. SPECIFICATIONS SUBJECT TO CHANGE WITHOUT NOTICE.

REV.	ECN	DATE	DESCRIPTION	CHG BY	APPD BY
1	18059	12/12/12	INITIAL RELEASE		

Created on AUTOCAD

DIMENSIONING AND TOLERANCE PER ANSI Y14.5M-1992 UNLESS OTHERWISE SPECIFIED, DIMENSIONS ARE IN INCHES (MM). TOLERANCES: .XX" = ±.01 (25) .XXX" = ±.005 (127) .XXXX" = ±.002 (50) ANGLE TOL. 1°

IN ACCEPTING OUR DRAWINGS, BLUEPRINTS, OR SUPPORTING DOCUMENTATION FOR QUOTATION OR OTHER PURPOSES, YOU AGREE TO DEFEND AND HOLD HUBBELL INCORPORATED AND ITS DESIGNERS, ENGINEERS, AND OTHER PERSONNEL HARMLESS FROM AND AGAINST ALL SUCH CLAIMS AND THAT YOU WILL MAKE NO USE OF SAME WITHOUT PERMISSION.

PROJECT REFERENCE: 2011-014

MATERIAL:

DRAWN BY: D.O'CONNOR 12/12/12

CHECKED BY:

APPROVED BY:

TITLE: 2U FIBER OPTIC ENCLOSURE FOR 6 PACK HD, NA

Hubbell Premise Wiring
HUBBELL INCORPORATED (Delaware)
23 CLARA DRIVE, SUITE 103 MASTIC, CT 06355

ITEM	DESCRIPTION	QTY
9	ACCESSORY KIT	1
8	10-32X1/4" SORW	4
7	MOUNT BRKT	2
6	REAR PANEL	1
5	COVER-TOP FRONT	1
4	SWELL LATCH	2
3	DOOR ASSY-2U	1
2	TRAY ASSEMBLY	1
1	CHASSIS	1

SIZE	DRAWING NO.	REV.
D	HWS12933C	1
SCALE:	1/1	SHEET 1 OF 1